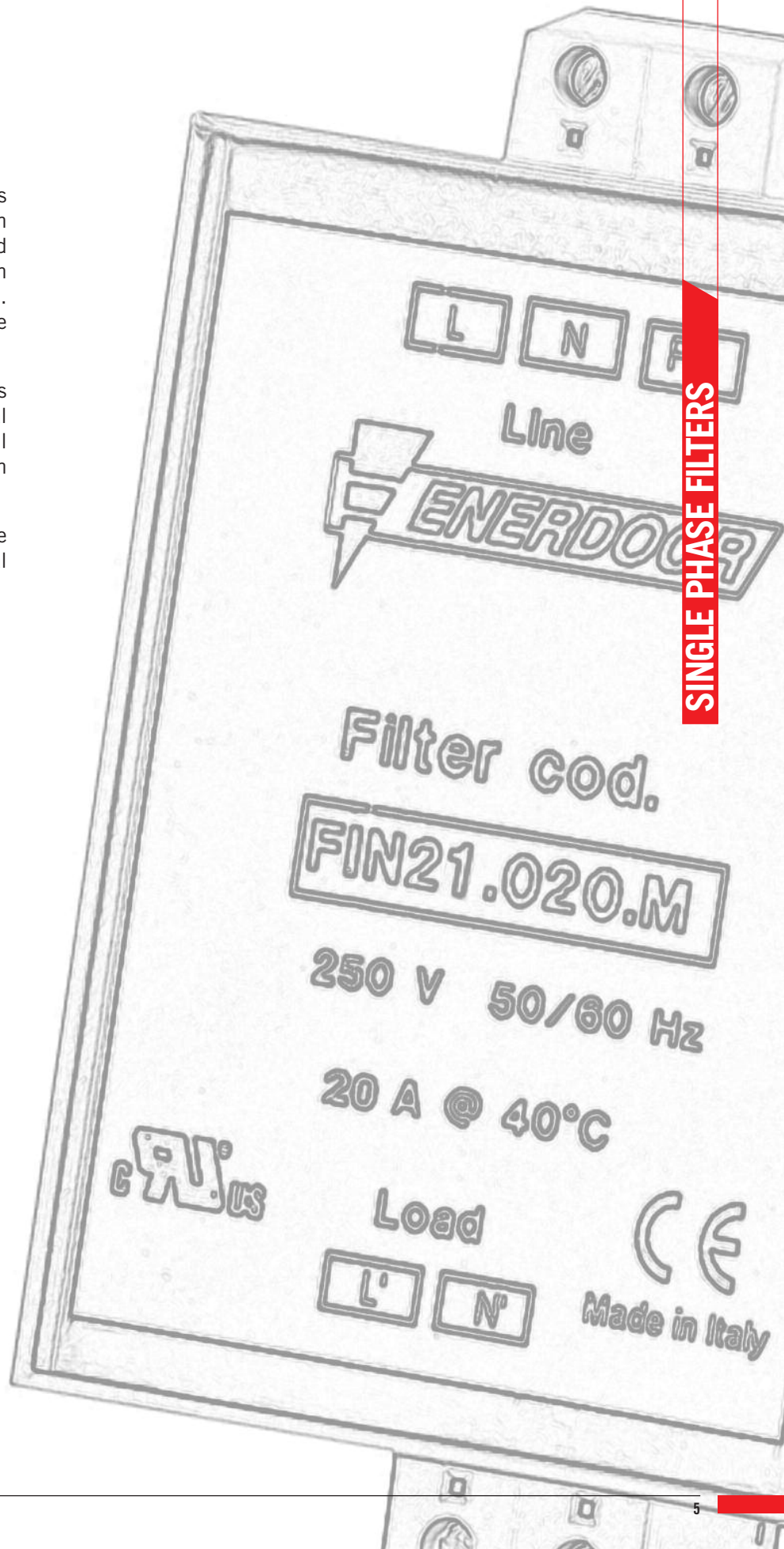


Filter Selection Guide	DESCRIPTION	CURRENT RANGE (A)	NOMINAL VOLTAGE (V)	CONNECTORS					FEATURES					APPLICATIONS				Approval	
				Faston	Terminal Blocks	Screws	Cables	IEC Connector/ Faston	Regenerative Systems	DIN Rail Mount	Long Cable Applications	Low Frequency Attenuation	Book Case Style	Very Low Leakage Current	Power Supply	Automation	Renewable Energy		Medical
Single Phase																			
FIN21	1 phase	3-20	0-250		•					•				•	•				UL US
FIN26	1 phase	3-20	0-250		•					•	•			•	•		•		UL US
FIN27	1 phase	3-20	0-250		•					•	•	•			•	•			UL US
FIN33	1 phase	3-75	0-250	•		•								•	•				UL US
FIN35	1 phase	5-24	0-250	•	•		•							•		•			
FIN40	1 phase	5-24	0-250	•	•		•				•			•		•			
FIN50	1 phase	5-24	0-250	•	•						•	•			•	•			
FIN60	1 phase	1-6	0-250					•						•	•				UL US
FIN70	1 phase	1-6	0-250					•						•	•				UL US
FIN80	1 phase	1-10	0-250					•						•	•				UL US

Enerdoor single phase filter series offers a current range from 1 to 75A with nominal voltage up to 250 Vac and guarantees high attenuation within compact mechanical dimensions. Additional select single phase lines are available up to 690 Vac.

This series features various connections such as: IEC plugs, faston tabs, terminal blocks, cables, screws, and DIN rail mounting for fast and easy installation into the enclosure.

For all models, a dedicated low leakage current solution is available for medical applications.



SINGLE PHASE FILTERS



ELECTRIC CHARACTERISTICS

Nominal voltage	0/250 V _{Ac} - 50/60 Hz
Phase to phase test voltage	1750 V _{Dc} (2 s)
Phase to ground test voltage	2150 V _{Dc} (2 s)
Climatic class	- 40 / +85 °C

RoHS

UL1283
CSA C22.2
E215863

FIN21	Rated Current 40°C	C _x (nF) ± 5%	C _y (nF) ± 5%	L ₁ (mH) ± 10%	Power Loss (W)
.003.M	3	68	22	2.2	1.5
.006.M	6	68	22	2.2	2.1
.010.M	10	68	22	2.1	2.8
.016.M	16	68	22	2.1	3.2
.020.M	20	68	22	2.0	4

Leakage current at 230 V phase to ground 50 Hz / 40°C < 1mA

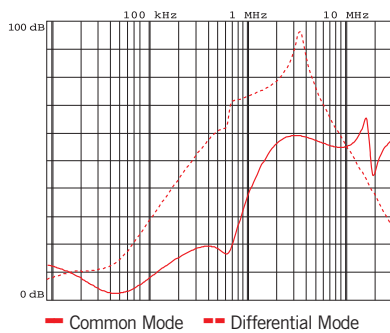
MECHANICAL DIMENSIONS (mm)

FIN21	A	B	H	N	Weight Kg	Case
.003.M	65	85	39	11	0.316	1
.006.M	65	85	39	11	0.316	1
.010.M	65	85	39	11	0.316	1
.016.M	65	85	39	11	0.316	1
.020.M	65	85	39	11	0.316	1

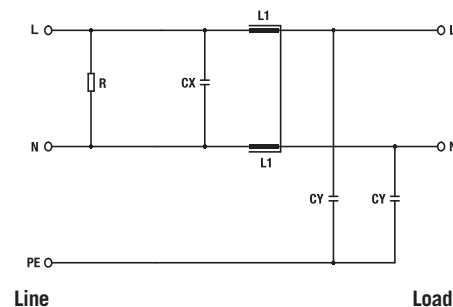
CONNECTION

Rigid Cable (mm ²)	Flexible Cable (mm ²)	Torque (Nm)
0.2 - 6	0.2 - 4	0.8
0.2 - 6	0.2 - 4	0.8
0.2 - 6	0.2 - 4	0.8
0.2 - 6	0.5 - 4	0.8
0.2 - 6	0.5 - 4	0.8

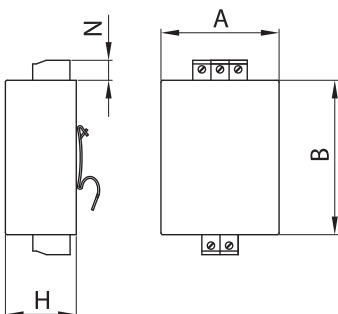
TYPICAL ATTENUATION



ELECTRIC DIAGRAM



CASE 1





ELECTRIC CHARACTERISTICS

Nominal voltage	0/250 V _{Ac} - 50/60 Hz
Phase to phase test voltage	1750 V _{Dc} (2 s)
Phase to ground test voltage	2150 V _{Dc} (2 s)
Climatic class	- 40 / +85 °C

RoHS

UL1283
CSA C22.2
E215863

FIN26	Rated Current 40°C	ΣCx (nF) ± 5%	Cy (nF) ± 5%	L1 (mH) ± 10%	Power Loss (W)
.003.M	3	136	22	2.2	1.5
.006.M	6	136	22	2.2	2.1
.010.M	10	136	22	2.1	2.8
.016.M	16	136	22	2.1	3.2
.020.M	20	136	22	2.0	4

Leakage current at 230 V phase to ground- 50 Hz / 40°C < 1mA

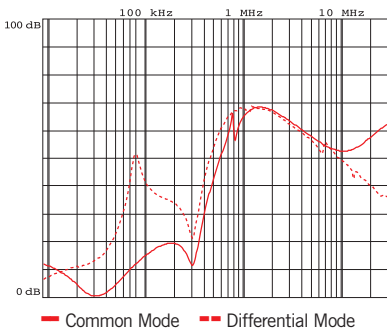
MECHANICAL DIMENSIONS (mm)

FIN26	A	B	H	N	Weight Kg	Case
.003.M	65	85	39	11	0.320	1
.006.M	65	85	39	11	0.320	1
.010.M	65	85	39	11	0.320	1
.016.M	65	85	39	11	0.320	1
.020.M	65	85	39	11	0.320	1

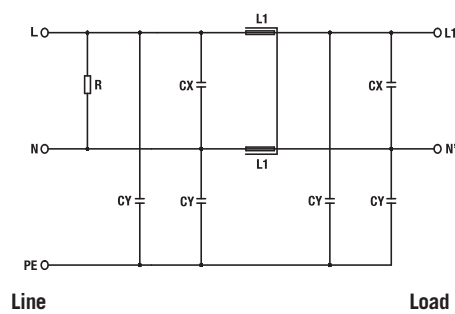
CONNECTION

Rigid Cable (mm ²)	Flexible Cable (mm ²)	Torque (Nm)
0.2 - 6	0.2 - 4	0.8
0.2 - 6	0.2 - 4	0.8
0.2 - 6	0.2 - 4	0.8
0.2 - 6	0.5 - 4	0.8
0.2 - 6	0.5 - 4	0.8

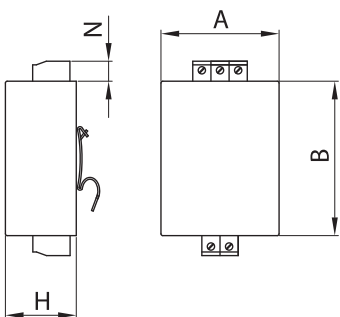
TYPICAL ATTENUATION



ELECTRIC DIAGRAM



CASE 1





ELECTRIC CHARACTERISTICS

Nominal voltage	0/250 V _{Ac} - 50/60 Hz
Phase to phase test voltage	1750 V _{Dc} (2 s)
Phase to ground test voltage	2150 V _{Dc} (2 s)
Climatic class	- 40 / +85 °C

RoHS

UL1283
CSA C22.2
E215863

FIN27	Rated Current 40°C	ΣCx (nF) ± 5%	Cy1 (nF) ± 5%	L1 (mH) ± 10%	L2 (mH) ± 10%	Power Loss (W)
.003.M	3	136	22	2.2	2.2	1.5
.006.M	6	136	22	2.2	2.2	2.1
.010.M	10	136	22	2.1	2.1	2.8
.016.M	16	136	22	2.1	2.1	3.2
.020.M	20	136	22	2.0	2.0	4

Leakage current at 230 V phase to ground- 50 Hz / 40°C < 1mA

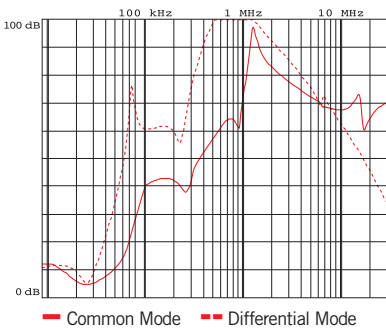
MECHANICAL DIMENSIONS (mm)

FIN27	A	B	H	N	Weight Kg	Case
.003.M	65	85	39	11	0.320	1
.006.M	65	85	39	11	0.320	1
.010.M	65	85	39	11	0.320	1
.016.M	65	85	39	11	0.320	1
.020.M	65	85	39	11	0.320	1

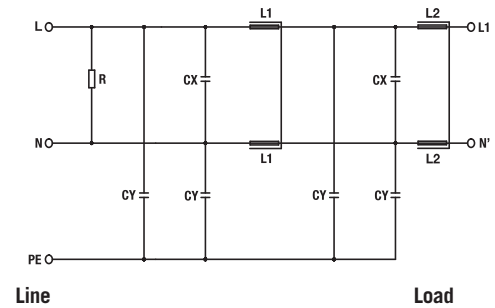
CONNECTION

Rigid Cable (mm ²)	Flexible Cable (mm ²)	Torque (Nm)
0.2 - 6	0.2 - 4	0.8
0.2 - 6	0.2 - 4	0.8
0.2 - 6	0.2 - 4	0.8
0.2 - 6	0.5 - 4	0.8
0.2 - 6	0.5 - 4	0.8

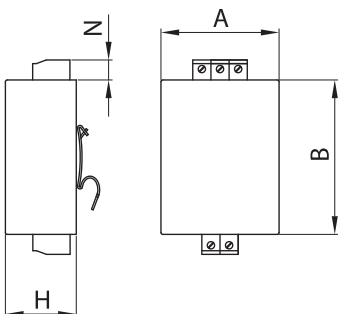
TYPICAL ATTENUATION



ELECTRIC DIAGRAM



CASE 1





ELECTRIC CHARACTERISTICS

Nominal voltage	0/250 V _{Ac} - 50/60 Hz
Phase to phase test voltage	1750 V _{Dc} (2 s)
Phase to ground test voltage	2150 V _{Dc} (2 s)
Climatic class	- 40 / +85 °C

RoHS



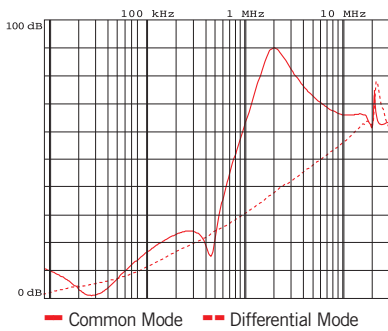
FIN33	Rated Current 40°C	ΣCx (μF) ± 5%	Cy (nF) ± 5%	L1 (mH) ± 10%	Power Loss (W)
.003.F	3	0.082	1.7	4.7	1.5
.006.F	6	0.082	1.7	4.7	2.1
.010.F	10	0.082	1.7	4.7	2.8
.020.F	20	0.2	0.8	3.5	3.8
.040.V	40	0.2	0.7	2.5	4.5
.050.V	50	0.2	0.6	2	5.5
.075.V	75	0.2	0.6	2.1	7

Leakage current at 230 V phase to ground- 50 Hz / 40°C < 1mA

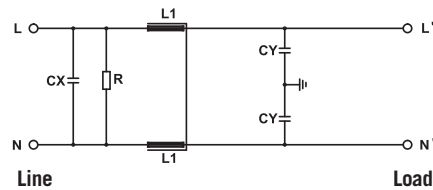
MECHANICAL DIMENSIONS (mm)

FIN33	A	B	H	N	F	L	I	V	d	Weight Kg	Case
.003.F	20.5	33	66	—	5	56	45	14	6.5	0.13	1
.006.F	20.5	33	66	—	5	56	45	14	6.5	0.13	1
.010.F	20.5	33	66	—	5	56	45	14	6.5	0.2	1
.020.F	39	51.8	84	—	5	74	65	15	6.5	0.18	2
.040.V	40	86.6	107	96	6x4	50/55	100	20	M5	0.18	3
.050.V	50	100	125	115	6x4	120	180	50	M6	0.30	4
.075.V	72	120	152	135	8x4	120	182	30	M8	0.40	5

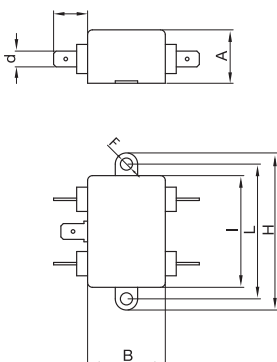
TYPICAL ATTENUATION



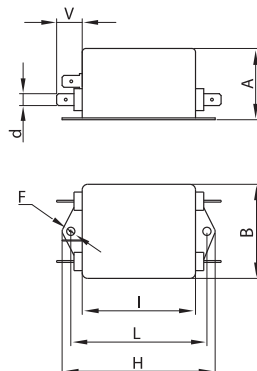
ELECTRIC DIAGRAM



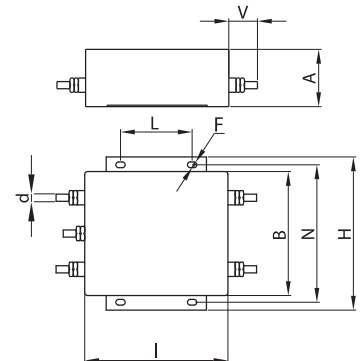
CASE 1



CASE 2



CASE 3/4/5





ELECTRIC CHARACTERISTICS

Nominal voltage	0/250 V _{Ac} - 50/60 Hz
Phase to phase test voltage	1750 V _{Dc} (2 s)
Phase to ground test voltage	2150 V _{Dc} (2 s)
Climatic class	- 40 / +85 °C

RoHS

FIN35	Rated Current 40°C	C _x (μF)	R (kΩ)	L ₁ (mH)	C _y (nF)	L ₂ (μH)	Power Loss (W)
.005.F	5	0.22	680	0.6	10	5	2
.010.F	10	0.22	680	0.6	10	5	2
.016.F	16	0.22	680	0.6	10	5	5
.024.M	24	0.22	680	0.6	10	5	5

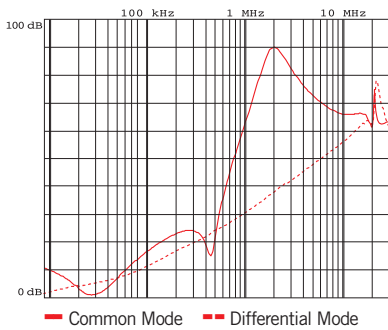
Leakage current at 230 V phase to ground- 50 Hz / 40°C < 1mA

MECHANICAL DIMENSIONS (mm)

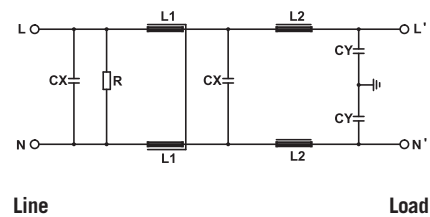
FIN35	A	B	H	N	F	L	I	V	d	Weight Kg	Case
.005.F	29	51	84.5	—	4.5	74.5	63.5	13.5	6.5	0.13	1
.010.F	33	51	84.5	—	4.5	74.5	63.5	13.5	6.5	0.18	2
.016.F	39.5	51	97	—	4.5	86.5	75.5	13.5	6.5	0.26	3
.024.M	49.5	51	70	60	4.5	51	93	13	22	0.46	4

The filter **FIN35.005** is also available with output on cable

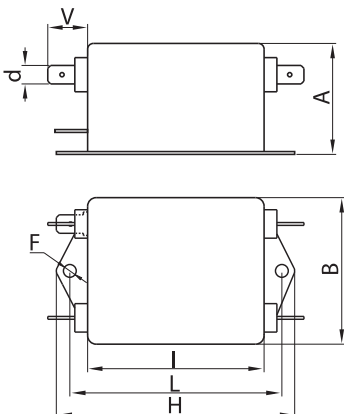
TYPICAL ATTENUATION



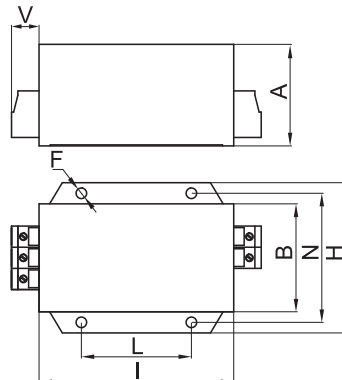
ELECTRIC DIAGRAM



CASE 1/2/3



CASE 4





ELECTRIC CHARACTERISTICS

Nominal voltage	0/250 V _{Ac} - 50/60 Hz
Phase to phase test voltage	1750 V _{Dc} (2 s)
Phase to ground test voltage	2150 V _{Dc} (2 s)
Climatic class	- 40 / +85 °C

RoHS

FIN40	Rated Current 40°C	C _x (μF)	R (kΩ)	L ₁ (mH)	C _y (nF)	L ₂ (μH)	Power Loss (W)
.005.F	5	0.22	680	0.68	10	5	2
.010.F	10	0.22	680	0.68	10	5	2
.016.F	16	0.22	680	0.68	10	5	5
.024.M	24	0.22	680	0.68	10	5	5

Leakage current at 230 V phase to ground- 50 Hz / 40°C < 1.5mA

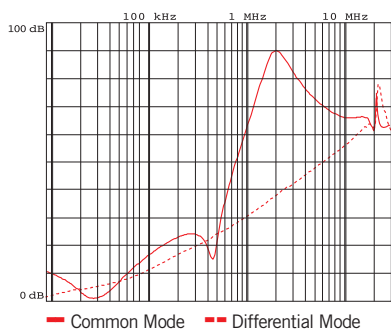
MECHANICAL DIMENSIONS (mm)

FIN40	A	B	H	N	F	L	I	V	d	Weight Kg	Case
.005.F	29	51	84.5	—	4.5	74.5	63.5	13.5	6.5	0.13	1
.010.F	33	51	84.5	—	4.5	74.5	63.5	13.5	6.5	0.18	2
.016.F	39.5	51	97	—	4.5	86.5	75.5	13.5	6.5	0.26	3
.024.M	49.5	51	70	60	4.5	51	93	13	22	0.46	4

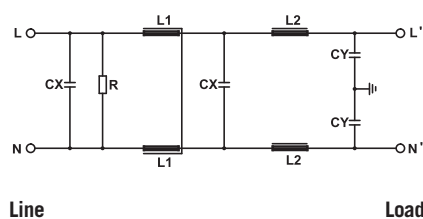
F = Faston – M = Terminals

The filter **FIN40.005** is also available with output on cable

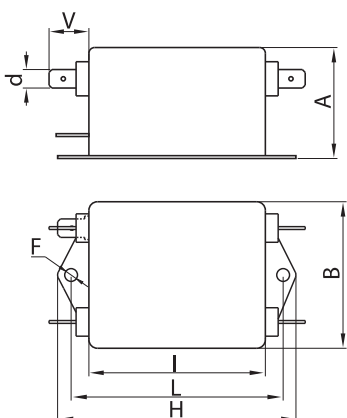
TYPICAL ATTENUATION



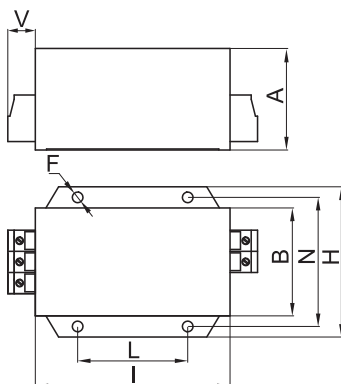
ELECTRIC DIAGRAM



CASE 1/2/3



CASE 4





ELECTRIC CHARACTERISTICS

Nominal voltage	0/250 V _{Ac} - 50/60 Hz
Phase to phase test voltage	1750 V _{Dc} (2 s)
Phase to ground test voltage	2150 V _{Dc} (2 s)
Climatic class	- 40 / +85 °C

RoHS

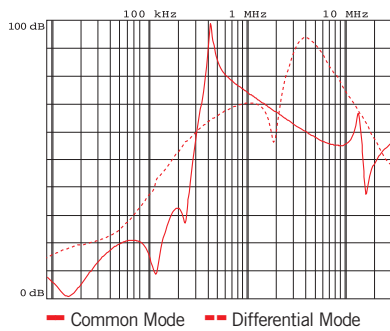
FIN50	Rated Current 40°C	C _x (μF)	R (kΩ)	L1 (mH)	Cy1 (nF)	Cy1 (nF)	L2 (mH)	Power Loss (W)
.005.F	5	0.22	680	1.2	4.7	4.7	1	2
.010.F	10	0.22	680	1	4.7	4.7	0.8	2
.016.F	16	0.22	680	0.8	4.7	4.7	0.6	5
.024.M	24	0.22	680	0.8	4.7	4.7	0.6	5

Leakage current at 230 V phase to ground- 50 Hz / 40°C < 2.2mA

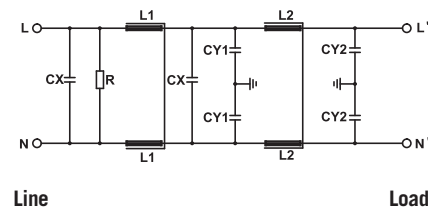
MECHANICAL DIMENSIONS (mm)

FIN50	A	B	H	N	F	L	I	V	d	Weight Kg	Case
.005.F	39	51	84.5	—	4.5	74.5	63.5	13.5	6.5	0.2	1
.010.F	49.5	51	97	—	4.5	86.5	75.5	13.5	6.5	0.35	2
.016.F	45	84.5	105	95	6x4	51	99.5	13.5	6.5	0.7	3
.024.M	49.5	84.5	105	95	6x4	51	99.5	13	—	0.93	4

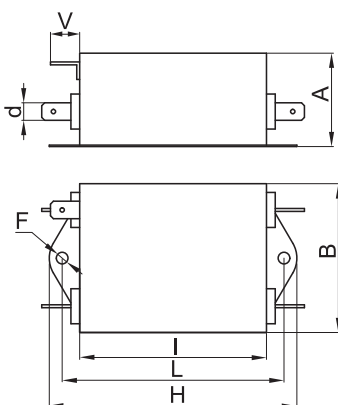
TYPICAL ATTENUATION



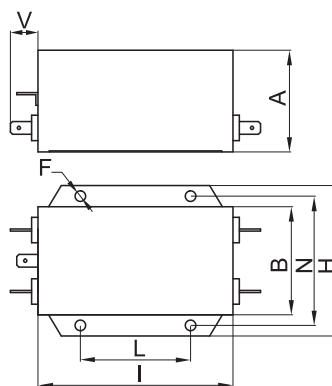
ELECTRIC DIAGRAM



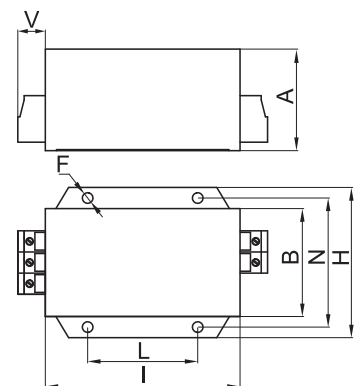
CASE 1/2



CASE 3



CASE 4





ELECTRIC CHARACTERISTICS

Nominal voltage	0/250 V _{Ac} - 50/60 Hz
Phase to phase test voltage	1450 V _{Dc} (2 s)
Phase to ground test voltage	2150 V _{Dc} (2 s)
Climatic class	- 40 / +85 °C



FIN60	Rated Current 40°C	C _x (μF)	L1 (mH)	C _y (nF)	Power Loss (W)
.001.VF	1	0.047	1	2.2	1
.003.VF	3	0.047	1	2.2	2
.006.VF	6	0.047	1	2.2	3

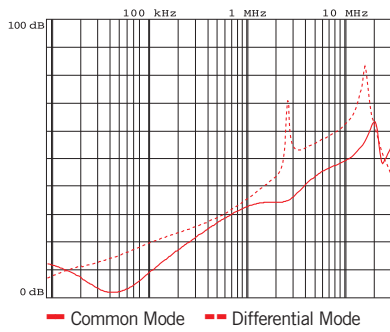
Leakage current at 230 V phase to ground- 50 Hz / 40°C < 1mA

Available on request for medical devices

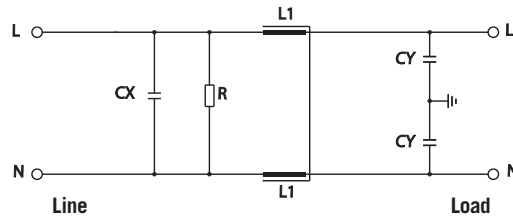
MECHANICAL DIMENSIONS (mm)

FIN60	A	B	C	d	E	F	G	H	I	L	V	Weight Kg	Case
.001.VF	40	22	7	6.5	24	3.5	50	40	31	23	14	0.1	1
.003.VF	40	22	7	6.5	24	3.5	50	40	31	23	14	0.1	1
.006.VF	40	22	7	6.5	24	3.5	50	40	31	23	14	0.1	1

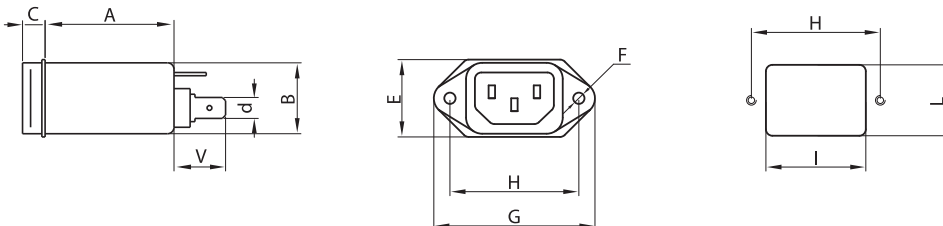
TYPICAL ATTENUATION



ELECTRIC DIAGRAM



MECHANICAL DIMENSIONS (mm)





ELECTRIC CHARACTERISTICS

Nominal voltage	0/250 V _{Ac} - 50/60 Hz
Phase to phase test voltage	1450 V _{Dc} (2 s)
Phase to ground test voltage	2150 V _{Dc} (2 s)
Climatic class	- 40 / +85 °C



FIN70	Rated Current 40°C	C _x (μF)	L ₁ (mH)	C _y (nF)	Power Loss (W)
.001.VF	1	0.047	1	2.2	1
.003.VF	3	0.047	1	2.2	2
.006.VF	6	0.047	1	2.2	3

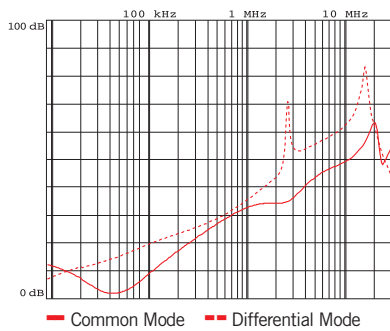
Leakage current at 230 V phase to ground- 50 Hz / 40°C < 1mA

Available on request for medical devices

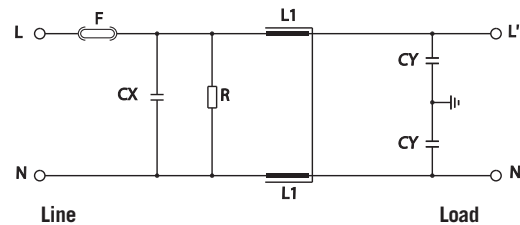
MECHANICAL DIMENSIONS (mm)

FIN70	A	B	C	d	E	F	G	H	I	L	V	Weight Kg	Case
.001.VF	40	33	7	6.5	36	3.5	45	36	29.5	33.5	14	0.12	1
.003.VF	40	33	7	6.5	36	3.5	45	36	29.5	33.5	14	0.12	1
.006.VF	40	33	7	6.5	36	3.5	45	36	29.5	33.5	14	0.12	1

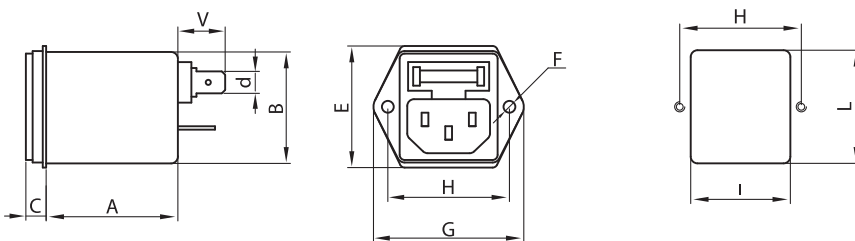
TYPICAL ATTENUATION



ELECTRIC DIAGRAM



MECHANICAL DIMENSIONS (mm)





ELECTRIC CHARACTERISTICS

Nominal voltage	0/250 V _{Ac} - 50/60 Hz
Phase to phase test voltage	1450 V _{Dc} (2 s)
Phase to ground test voltage	2150 V _{Dc} (2 s)
Climatic class	- 40 / +85 °C



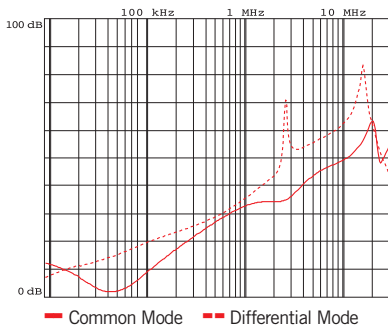
FIN80	Rated Current 40°C	C _x (μF)	L ₁ (mH)	C _y (nF)	Power Loss (W)
.001.VFI	1	0.1	10	2.2	1
.003.VFI	3	0.1	3	2.2	2
.006.VFI	6	0.1	1	2.2	3
.010.VFI	10	0.22	0.5	2.2	5

Leakage current at 230 V phase to ground- 50 Hz / 40°C < 1mA

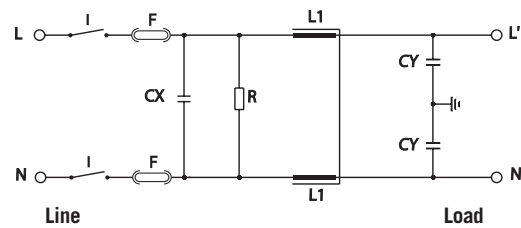
MECHANICAL DIMENSIONS (mm)

FIN80	A	B	C	d	E	F	G	H	I	L	V	Weight Kg	Case
.001.VF	39	61	6	6.5	50	3.5	65	40	30	62	14	0.2	1
.003.VF	39	61	6	6.5	50	3.5	65	40	30	62	14	0.2	1
.006.VF	39	61	6	6.5	50	3.5	65	40	30	62	14	0.2	1
.010.VF	39	61	6	6.5	50	3.5	65	40	30	62	14	0.2	1

TYPICAL ATTENUATION



ELECTRIC DIAGRAM



MECHANICAL DIMENSIONS (mm)

